

Introduction of Department of international Health

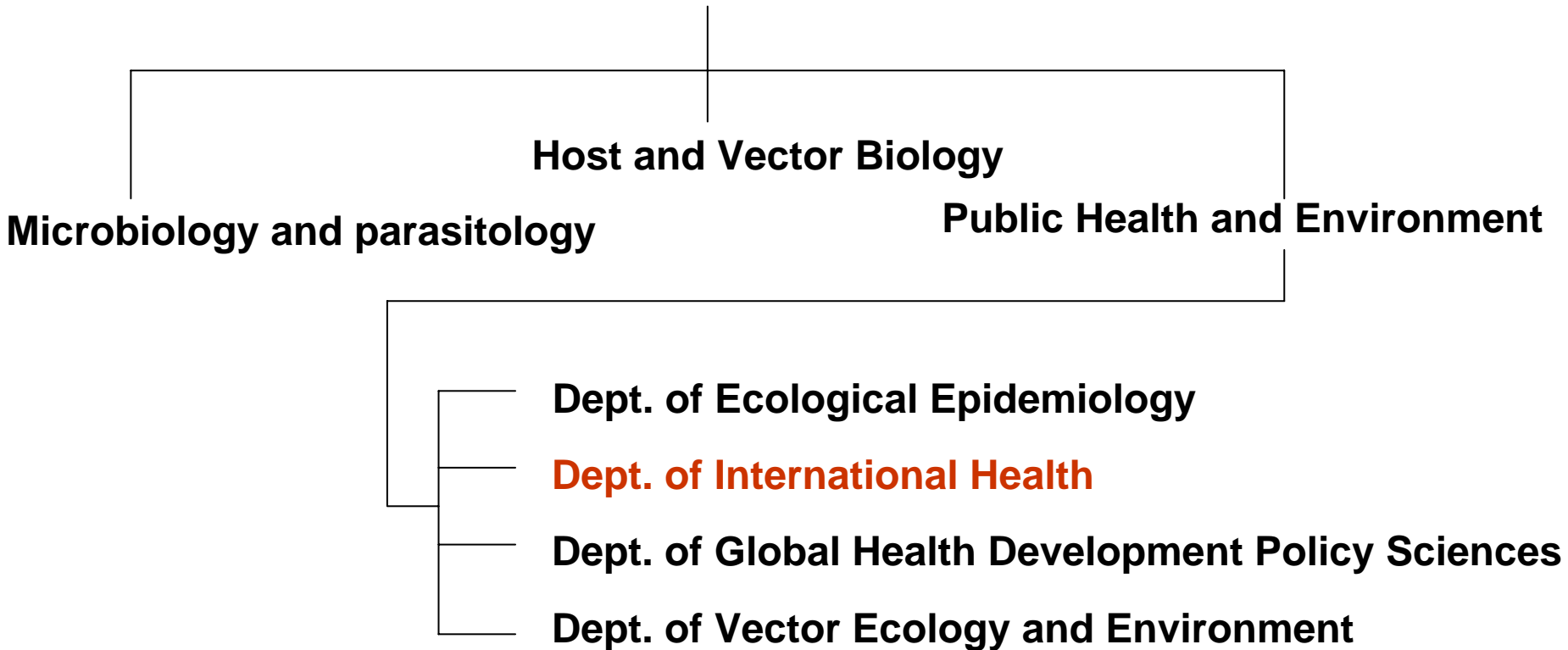
Taro Yamamoto
Dept. of International Health
Institute of tropical Medicine
Nagasaki University

Outline

- Organization Chart
- Staff of our department
- Research activities
 - Environment and health
 - Medical ecology
 - Malaria
 - Evolution biology
- Social responsibility

Organization Chart

Institute of Tropical Medicine



Staff of our department

(Total 13)

- Taro Yamamoto (Chair)
- Sumihisa Honda (Associate Prof.)
- Toshihiko Sunahara (Assistant Prof.)
- Masahiro Hashizume (Assistant Prof.)
- Tomoko Abe (Post-doctoral fellow)
- Osuke Komazawa (PhD student)
- Keiko Akahane (PhD student)
- Sengchanh (PhD student) (Lao PDR)
- Administrative staff
 - (Mr. Eguchi, Ms. Sakitani, Ms. Shiraishi)
- Collaborating staff
 - (Dr. Kondo, Dr. Yamaguchi, Dr. Ichikawa, Dr. Yano)



Self-Introduction

- Name: Taro Yamamoto, MD, PhD and PhD.
- Course in charge: International Health and epidemiology
- Profile1: Medical doctor trained by emergency medicine and worked in ER, but since then almost no, if any, actual experience in clinical medicine.
- Profile 2 (overseas experience): Zimbabwe, US and Haiti (precious experience there)
- Where I have studied so far:
 - Medical school and post graduate school, Nagasaki university (Nagasaki)
 - Post graduate school, The university of Tokyo (Tokyo)
 - Harvard School of public Health (Boston)
- Where I have worked so far:
 - Institute of Tropical Medicine, Nagasaki University (Nagasaki)
 - Ministry of Health and Welfare, Zimbabwe (Africa)
 - School of Public Health, Tokyo University (Kyoto)
 - Weil Medical School, Cornell university (NYC)
 - WHO (Manila)
 - Research institute of Kaposi sarcoma and opportunistic infection, Haiti
 - Ministry of Foreign Affairs, Japan (Tokyo)
 - Again and now, Institute of Tropical Medicine, Nagasaki University (Nagasaki)

Research activities

There are three major units in our dept.

- Environment and health
 - Climate change
 - Asian (Yellow) dust
- Medical ecology
 - Malaria
- Evolution biology and molecular evolution
 - HIV
 - HTLV-1
 - Tuberculosis



Social responsibility

- Policy development
- International collaboration through
 - MOFA
 - JICA
 - NGO/NPO

*on the
ground and at the
national level*





Photo by UNICEF

Japan was a poor nation

**Got \$6.5 billion aid
from UNICEF for 15y
since 1949**



Photo by UNICEF



Photo by CARE Japan

**10 mil people got
emergency relief from
international NGO (CARE)
for 8y since 1948.**



Think Locally



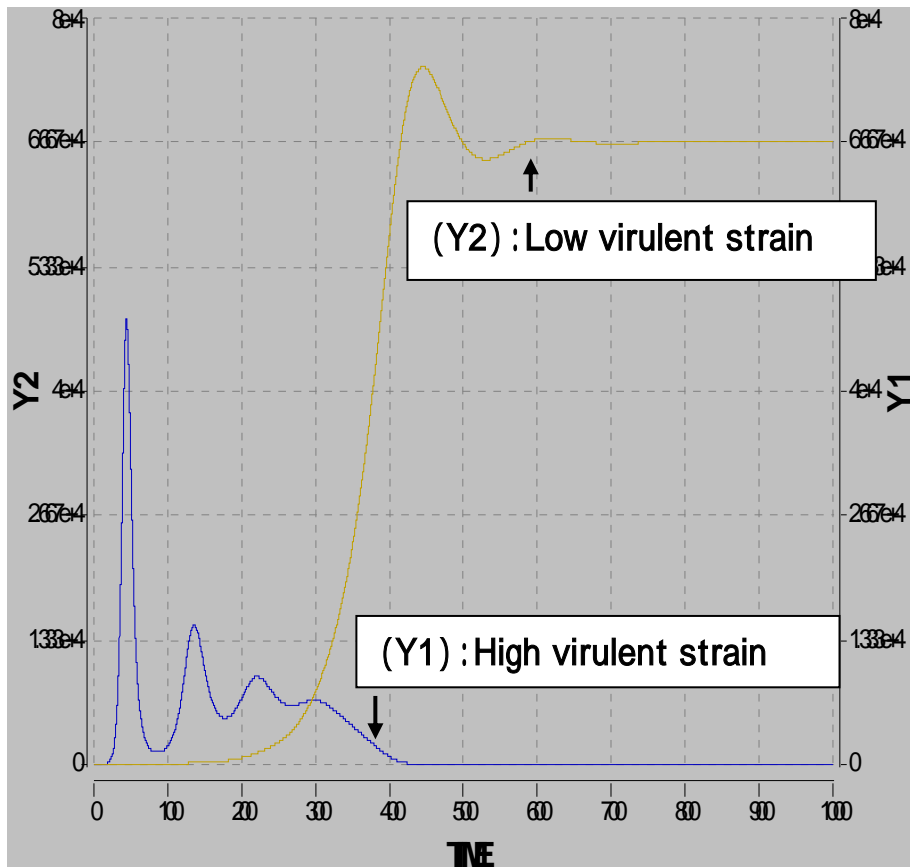
Act Globally

Millennium Development Goals (MDGs)

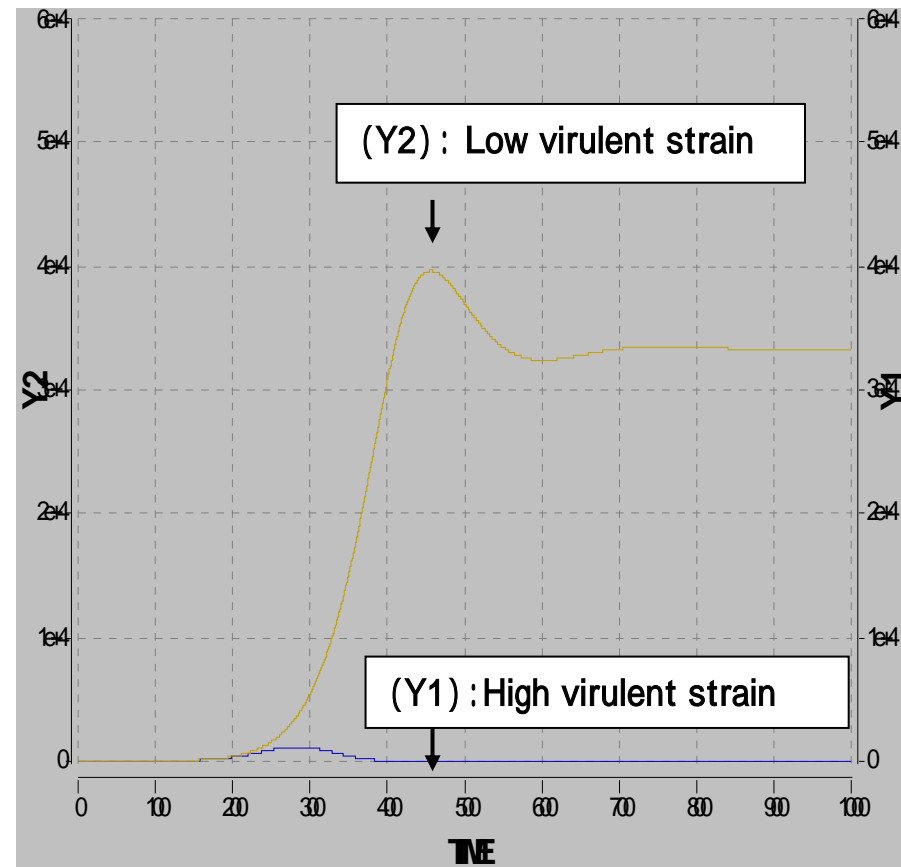
1. Eradicate extreme poverty and **hunger**
2. Achieve universal primary education
3. Promote gender equality and empower women
4. **Reduce child mortality**
5. **Improve maternal health**
6. **Combat HIV/AIDS, malaria and other diseases**
7. Ensure **environmental** sustainability
8. Develop a global partnership for development

Perception of symbiosis

[Highly sexual active population]



[Moderate sexual active population]



Evolution biology

and molecular evolution

- Adaptation or fitness with phylogeny
- Ancient DNA from remains
 - HIV
 - HTLV-1
 - Tuberculosis

